

HUDSON
APARTMENT

. GWARINPA . LIFECAMP



CARVING NICHE
RAISING STANDARDS

WELCOME TO
A LIFESTYLE
THAT IS AS
LUXURIOUS AS
IT IS INVITING



HUDSON

APARTMENT

Beautifully crafted and impeccable curated piece, the development encapsulates both traditional modern architecture and bespoke contemporary design. It houses a dwelling of 6 units of apartments all with en-suites bedrooms and open plan design to create breath taking interiors and a luxurious comfort. With a 4 bedroom and an open plan kitchen, this beautiful edifice shall be the first of its kind within the serene environment.

FACILITIES



24HOURS ELECTRICITY



WATER TREATMENT
PLANT.



HOME AUTOMATION



SOLAR PANEL
TECHNOLOGY



247 SURVEILLANCE
SYSTEM



CHILDREN
PLAYGROUND



PRIVATE GARDEN AREAS

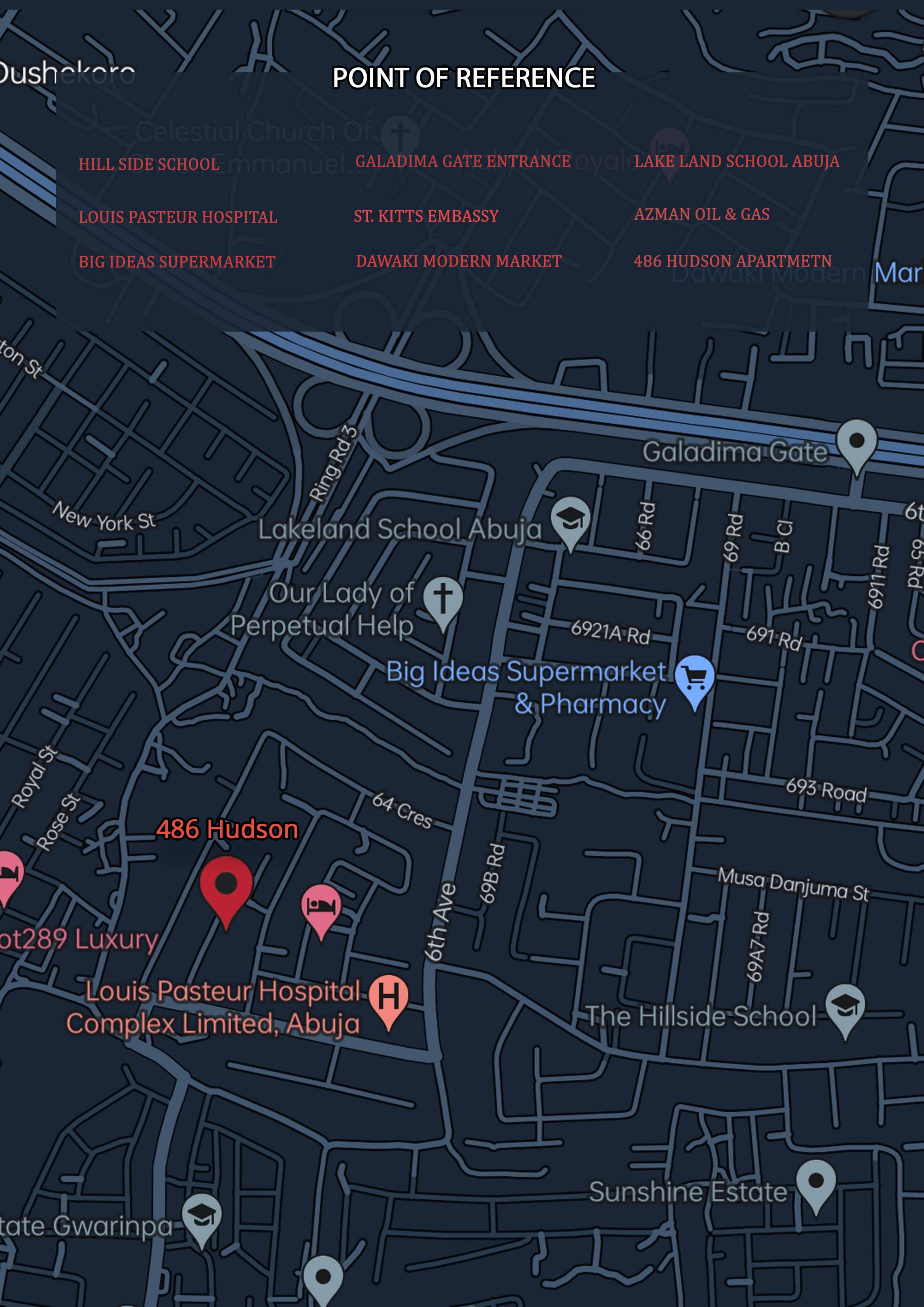


24HOURS FACILITY
MANAGEMENT



LANDSCAPED ENVIRONMENT





POINT OF REFERENCE

AN ENVIABLE
LOCATION.
AN INCREDIBLE
LIFESTYLE.

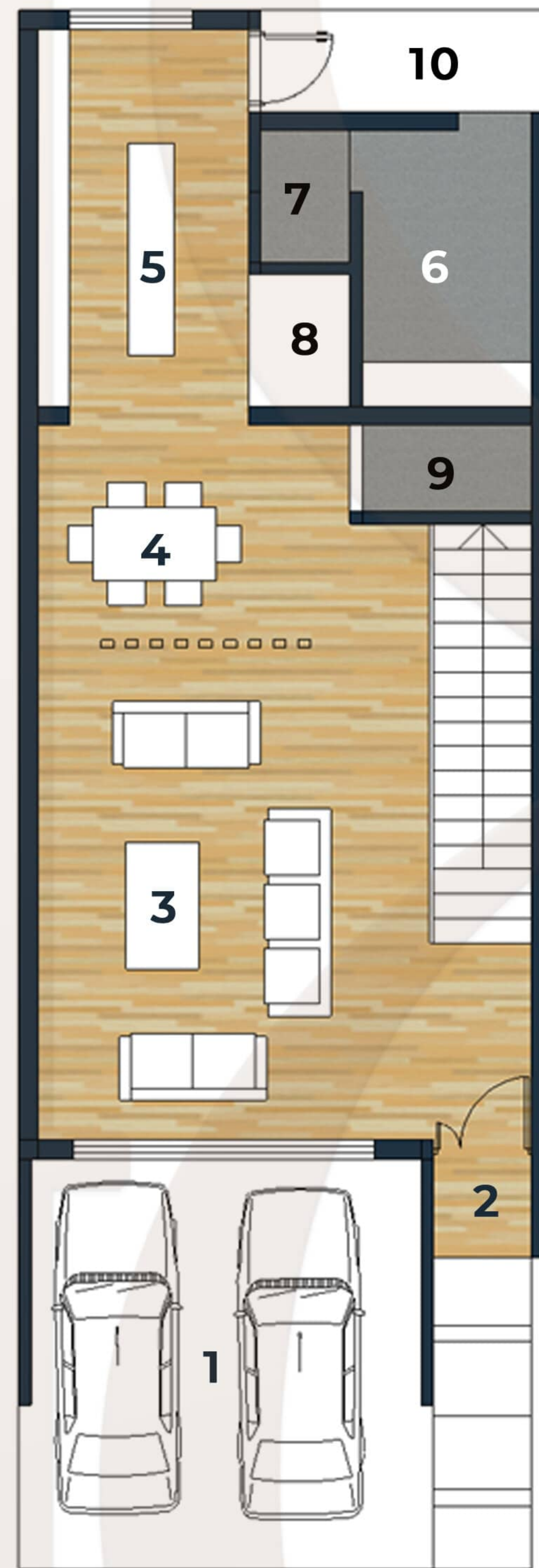
BEAUTIFULLY CURATED
4BEDROOM TERRACE
APARTMENT.



**A PERFECT BLEND OF MODERN
AND COMMUNAL LIVING**

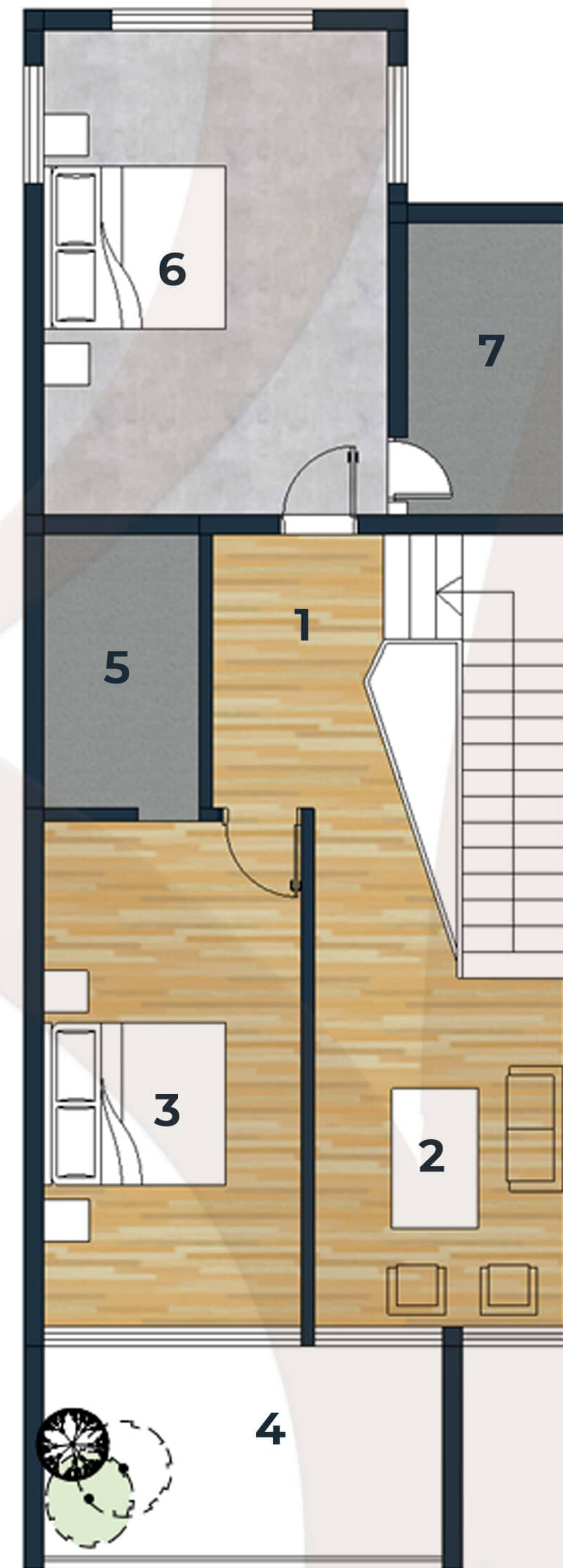


AN OPEN PLAN
STYLED HOME
ALLOWS FOR
ENDLESS
POSSIBILITIES



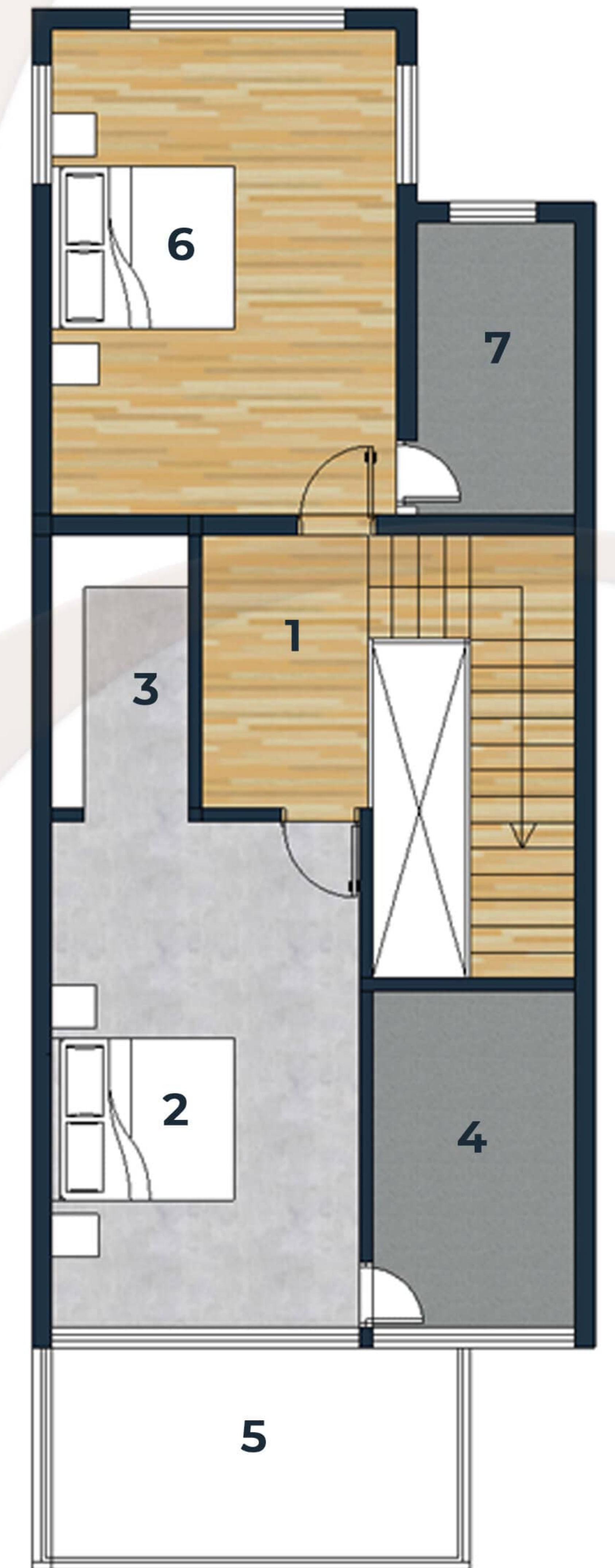
Ground

- 1. CAR PARK
- 2. ENTRANCE
- 3. LIVING ROOM
- 4. DINNING ROOM
- 5. KITCHEN
- 6. MAID'S ROOM
- 7. MAID'S TOILET
- 8. PANTERY
- 9. VISITOR'S TOILET
- 10. OUTDOOR



One

- 1. LOBBY
- 2. LOUNGE
- 3. BEDROOM ONE
- 4. BALCONY
- 5. TOILET ONE
- 6. BEDROOM TWO
- 7. TOILET TWO



Two

- 1. LOBBY
- 2. BEDROOM ONE
- 3..WORKING CLOSET
- 4. TOILET ONE
- 5. BALCONY
- 6. BEDROOM TWO
- 7. TOILET TWO



BESPOKE
Design

Disclaimer: These details are intended as a guide and do not form part of any specification or contract. Details of the design and the materials used, as well as any brand may vary in the finished product. Any images used are for illustration purposes only and do not form part of any contract or warranty.



EVERY DETAIL
Considered



Disclaimer: These details are intended as a guide and do not form part of any specification or contract. Details of the design and the materials used, as well as any brand may vary in the finished product. Any images used are for illustration purposes only and do not form part of any contract or warranty.

THERE'S NO SUCH THING AS A
ONE-SIZE-FITS-ALL BATHROOM
SOLUTION, BUT THE VERY BEST
DESIGN INCORPORATE A

Variety of elements




Disclaimer: These details are intended as a guide and do not form part of any specification or contract. Details of the design and the materials used, as well as any brand may vary in the finished product. Any images used are for illustration purposes only and do not form part of any contract or warranty.

LEAVING FOR WORK CAN BE THE DAY'S BIGGEST CHALLENGE

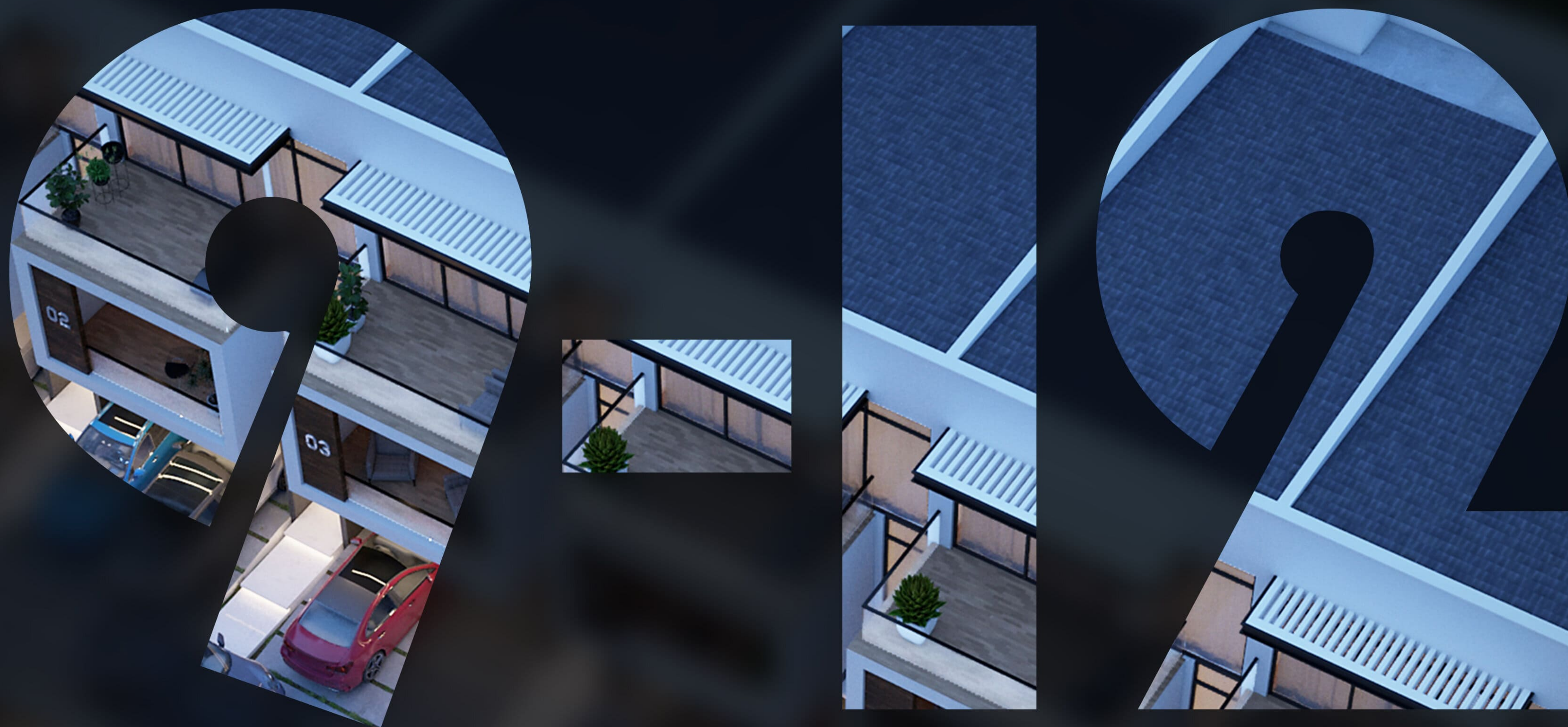


Disclaimer: These details are intended as a guide and do not form part of any specification or contract. Details of the design and the materials used, as well as any brand may vary in the finished product. Any images used are for illustration purposes only and do not form part of any contract or warranty.

A modern kitchen featuring dark wood-grain upper and lower cabinets. A central island with a light-colored countertop and dark wood-grain base is furnished with two grey upholstered bar stools. The island is positioned in front of a kitchen counter with a light-colored tiled backsplash. On the counter, there is a silver kettle, a black faucet, a blender, a cutting board, and a round pizza. To the left of the counter is a white coffee machine and a small potted plant. To the right is a built-in oven and another oven below it. The kitchen is illuminated by recessed ceiling lights and under-cabinet lighting. Two black pendant lights hang above the island. A refrigerator is visible on the far left.

A WELL CURATED KITCHEN JUST THE WAY YOU'VE
ALWAYS IMAGINED IT WILL BE

Disclaimer: These details are intended as a guide and do not form part of any specification or contract. Details of the design and the materials used, as well as any brand may vary in the finished product. Any images used are for illustration purposes only and do not form part of any contract or warranty.



MONTHLY DELIVERY



REDEFINED
Serenity



SOME DAY

YOU PLAN TO OWN YOUR DREAM HOME

SO WHY NOT MAKE IT THIS WEEKEND INSTEAD?

Make a booking with us
and secure a unit at the prestigious hudson
apartment

STARTING WITH JUST
N9,999,000



welcome home



CARVING NICHE
RAISING STANDARDS

CONTACT

suite 27, crown plaza, Eke A. Yesufu close
Off Adeogun Ajose Street,
Utako, FCT-ABuja
+234 706 474 6000
www.carvingnicheltd.com
carvingnicheltd@gmail.com



CARVING NICHE
RAISING STANDARDS

WWW.CARVINGNICHELTD.COM